

(CABG)

7

100 mg

75 100 mg/

*H*

*d*

v

**PEGASUS**

ACS 12

75 100mg 1

---

×

12

---

**PEGASUS**

PLATO (7.4% 5.4%)  
 PEGASUS ( 60 mg 16.1%  
 8.5%) ( )

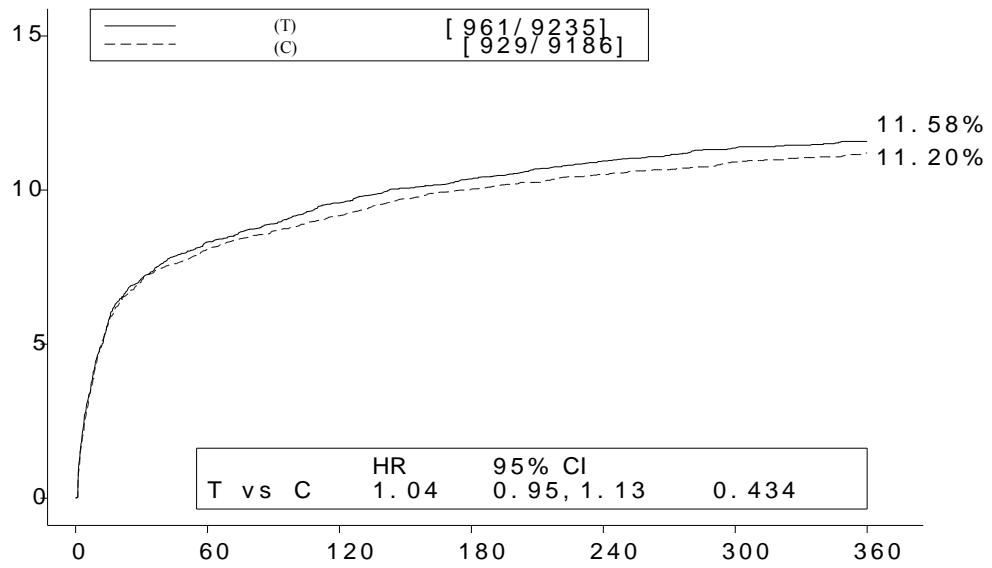
<

良性、恶性及性质不明的肿瘤（包括囊肿和息肉）			a
血液及淋巴系统疾病	b		
免疫系统疾病			c
代谢及营养类疾病	d	/	
精神病类			
各类神经系统疾病			
眼器官疾病			e
耳及迷路类疾病			
血管疾病			
呼吸系统、胸及纵隔疾病		f	

胃肠系统疾病		g	
皮肤及皮下组织类疾病		h	
各种肌肉骨骼及结缔组织疾病			i
肾脏及泌尿系统疾病			
生殖系统及乳腺疾病			k
各类检查		d	
各类损伤、中毒及手术并发症			

a  
b  
c  
d  
e  
f  
g  
h  
i  
j  
k  
l

( >50% )



T	9235	7246	6826	6545	5129	3783	3433
C	9186	7305	6930	6670	5209	3841	3479

	90mg, N=9235	N=9186	P-值*
			<

/ >50 g/L ≥4  
30-50 g/L 2 3

TIMI  
TIMI  
\*p-  
Cox  
50 g/L  
30-50 g/L

CABG 相关出血:

非-CABG 相关出血和非操作相关出血:

颅内出血:

**PEGASUS**

PEGASUS		60 mg + N=6958		N=6996	
3.	36	Kaplan-Meier (95% CI)		(PEGASUS)	p-
	KM%			KM%	
<b>TIMI</b>					-
TIMI	2.3	2.32 (1.68, 3.21)		1.1	<0.0001
	0.3	1.00 (0.44, 2.27)		0.3	1.0000
	0.6	1.33 (0.77, 2.31)		0.5	0.3130
TIMI	1.6	3.61 (2.31, 5.65)		0.5	<0.0001

<b>TIMI</b>					(Hgb)	≥50 g/L
Hgb		(Hct)	15%			
		7				
<b>ICH</b>						
<b>TIMI</b>	<b>TIMI</b>			<b>TIMI</b>		
<b>TIMI</b>				30-50 g/L		
<b>TIMI</b>						
<b>PLATO</b>	/					
		/			>50 g/L	≥4
<b>PLATO</b>				30-50 g/L	2-3	
<b>PLATO</b>						

PEGASUS 14.2% 60 mg 5.5% ( [ COPD ])

PLATO 5.9% 90 mg 7.4% >50%  
>50%

PLATO

PEGASUS 4% 60 mg >50%

( )

PLATO 22%

90 mg 60 mg 13% PEGASUS 5.5%

7% 15% 9.1%, 8.8% 7.5%

PEGASUS 90 mg 60 mg 6.3% 5.6%

1.5% PLATO

0.2% 0.1% PEGASUS 90 mg 60 mg /

1.6% 1.5% 1.1%

PLATO 3000 Holter

6.0% (3.5%) 1 2.2%

1.6% PLATO PEGASUS ( )

2 3 AV ) PLATO

90 mg 1.7% 1.5%

PEGASUS 60 mg 1.2% 0.9%

---

- 
-

ACS

—

—

P-gp CYP3A4 CYP3A4 (P-gp)  
P-gp P-gp

**CYP3A**

● CYP3A4 -

● CYP3A4 - C<sub>max</sub> 69%  
AUC 2.7 C<sub>max</sub> 38% AUC  
CYP3A4 ( )

**CYP3A**

CYP3A

◦  
P-gp CYP3A

CYP3A4



40 mg/



**P-gp** ( )

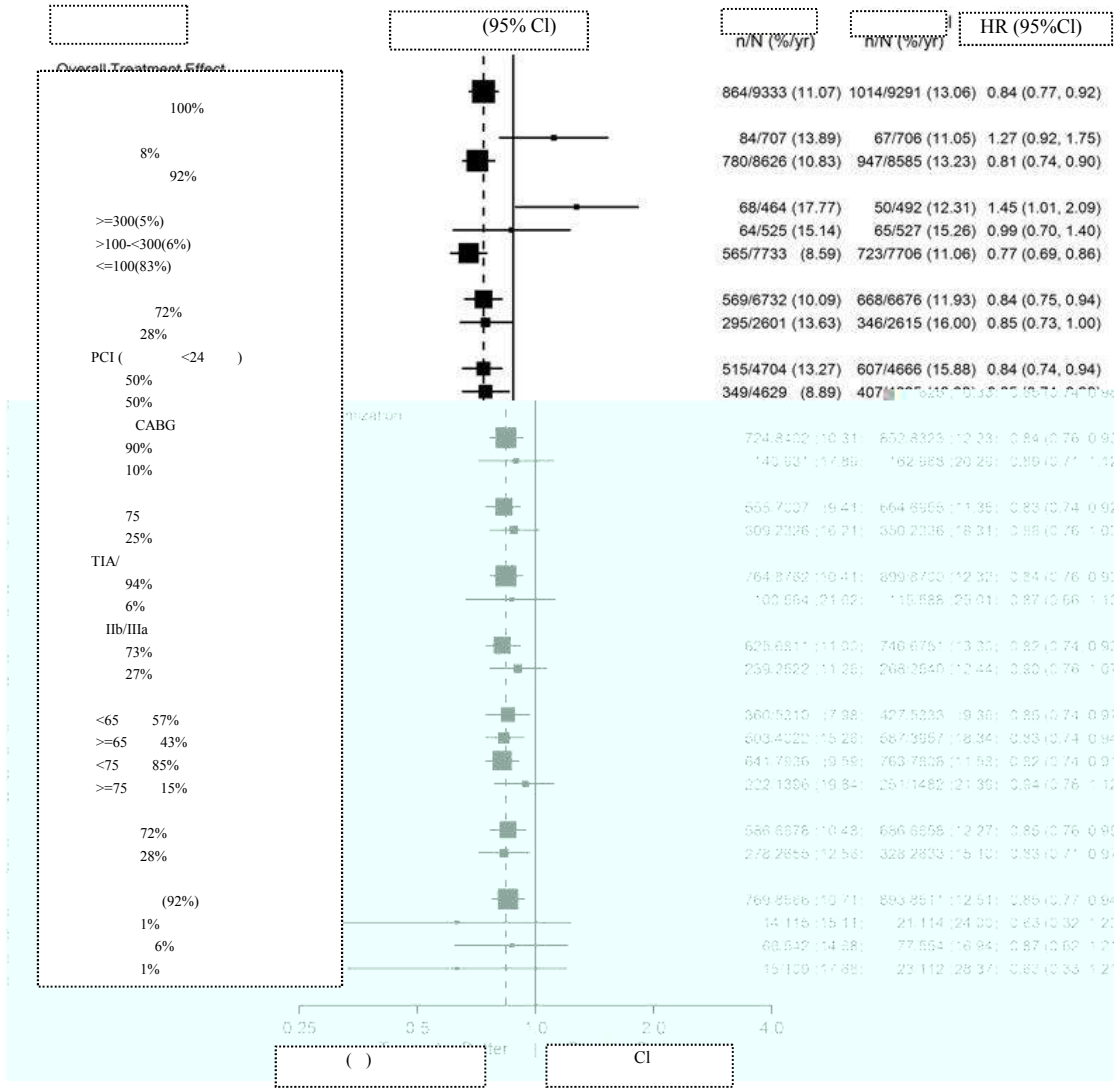
P-gp

- PLATO ( ACS )

	<b>N=9333</b>	<b>N=9291</b>	<b>(95% CI)</b>	<b>p-</b>

ST

ST



PLATO

---

---

---

---

---

" " \_ \_

---

---

---

---

" "



7 -

(PEGASUS)

	60 mg + N = 7045			N = 7067		<i>p</i>
		KM%	HR(95%CI)		KM%	
/	487 (6.9%)	7.8%	0.84 (0.75-0.94)			
/	174 (2.5%)	2.9%	0.83 (0.74-0.93)			
	285 (4.0%)	4.5%	0.84 (0.75-0.94)			
	91 (1.3%)	1.5%	0.75 (0.66-0.85)			
	174 (2.5%)	2.9%	0.83 (0.74-0.93)			
	289 (4.1%)	4.7%	0.84 (0.75-0.94)			

RRR 17% MI RRR 16% RRR 25%)  
 1 360 (17% RRR) 361 (16% RRR) RRR 3  
 2  
 60 mg ADP 1  
 60mg 75 42%  
 23~31% 75 10% 42% 29%

**Pegasus**

383 127 90mg 129  
 60mg 127  
 90 mg HR 0.54 95% CI 0.20, 1.45 MI 60 mg HR 0.70 95% CI 0.28, 1.75  
 8 PEGASUS 95% CI PEGASUS 95% CI  
 PEGASUS  
 TIMI PLATO TIMI TIMI PEGASUS PLATO  
 PEGASUS AE  
 PEGASUS AE  
 TIMI 90 mg 60 mg  
 1 0.8% 2 1.6% 0 0.0% 1  
 60mg PLATO  
 TIMI 90 mg 60 mg PLATO  
 1.7% 2 1.6% 0 0.0% 2

90mg bid N=127		60mg bid N=129		N=127
KM%	HR (95% CI)	KM%	HR (95% CI)	KM%

90mg bid N=120	60mg bid N=125	N=123
-------------------	-------------------	-------

---

---

---

a / 'TIMI

TIMI

ICH

P2Y<sub>12</sub>ADP

(CPTP)

-1 ENT-1







IPA

88

88

0537-2271888

0537-2983615

272104

<http://www.lkpc.com>